

## Hiroshima Excursion and Discussion

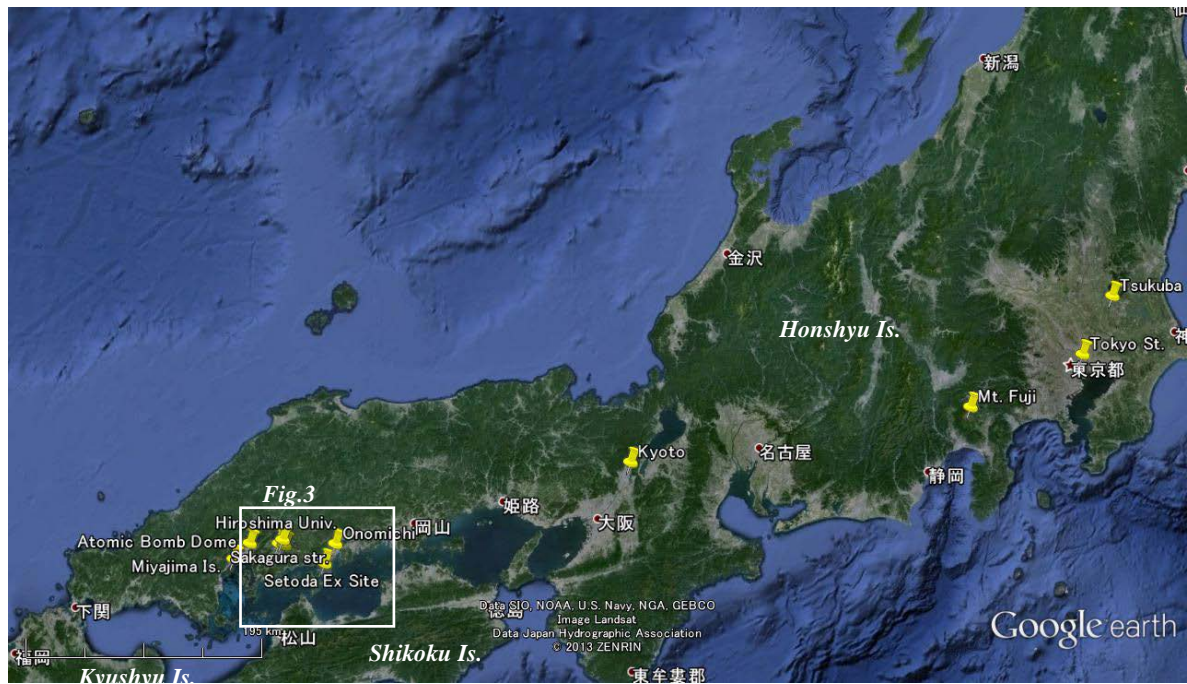


Fig.1

1 Mar 2014

- 9:30 Tsukuba station (Fig. 1)
- 15:00 Higashi-Hiroshima Station (Fig. 1, Fig. 2a) of Sanyo Shinkan-sen
- 15:20 Hiroshima University (Fig. 2a)
- 16:00 Workshop of “Nitrogen cycle in agricultural land of a western Japan” (Table1) at Conference room 1, at Gakushi-kaikan (Fig. 2b), Hiroshima University
- 18:00 Check in the room at Gakushi-kaikan (Fig. 2b)
- 19:00 Dinner at Teshio (Fig. 2b) for enjoying “Okonomi-yaki and Sake”, which are the original food and require of Hiroshima.

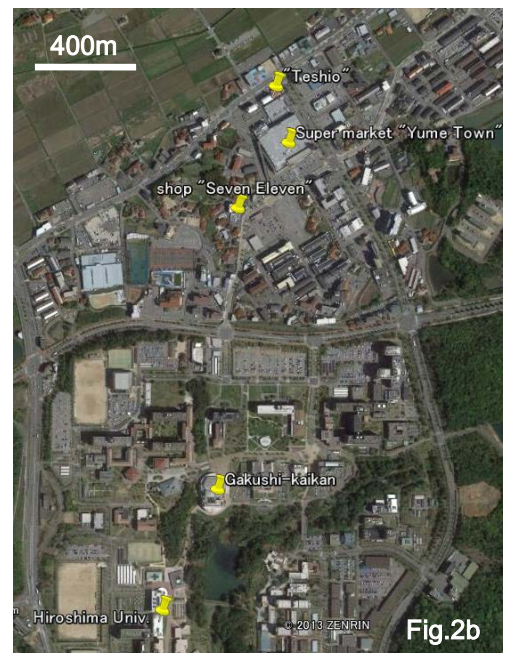
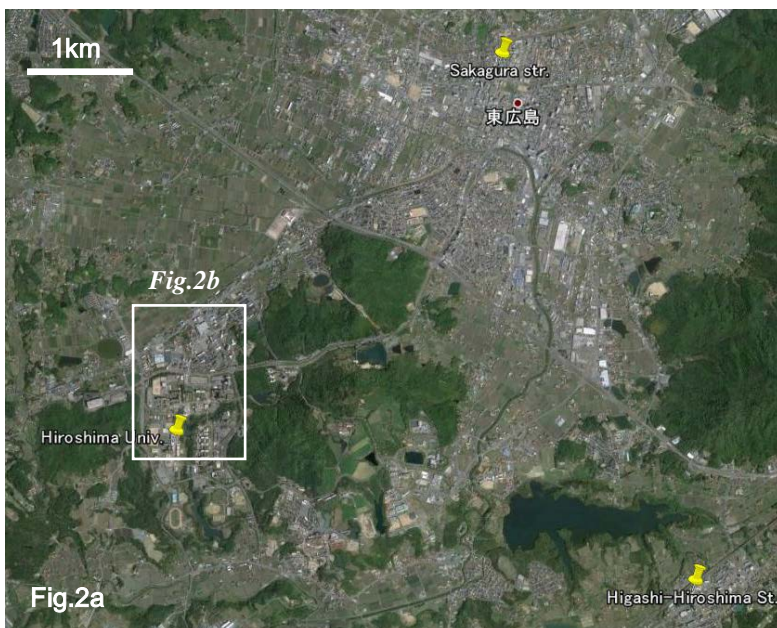




Table 1 Workshop Program

Workshop of "Nitrogen cycle in agricultural land of a western Japan"		
16:00-16:15	Research activities of nitrogen and phosphorus cycle in coastal watersheds in Hiroshima Terrestrial Environmental Group	Dr. S. Onodera (Hiroshima Univ.)
16:15-16:30	Water balance estimations in Setoda experimental catchment (SEC), using SWAT model, distributed type model	Dr. G. Jin (Hiroshima Univ.)
16:30-16:45	Groundwater flow and nitrate attenuation in a coastal agricultural watershed, SEC.	Dr. M. Saito (Okayama Univ.)
16:45-17:00	Nitrous oxide (N <sub>2</sub> O) in groundwater produced by nitrification and denitrification in an agricultural watershed	Dr. S. Onodera (Hiroshima Univ.)
17:00-17:15	Effects of agricultural small dams on nitrogen cycle in a suburban watershed	Dr. Y. Shimizu (JSPS Fellowship)
17:15-17:30	Discussion	

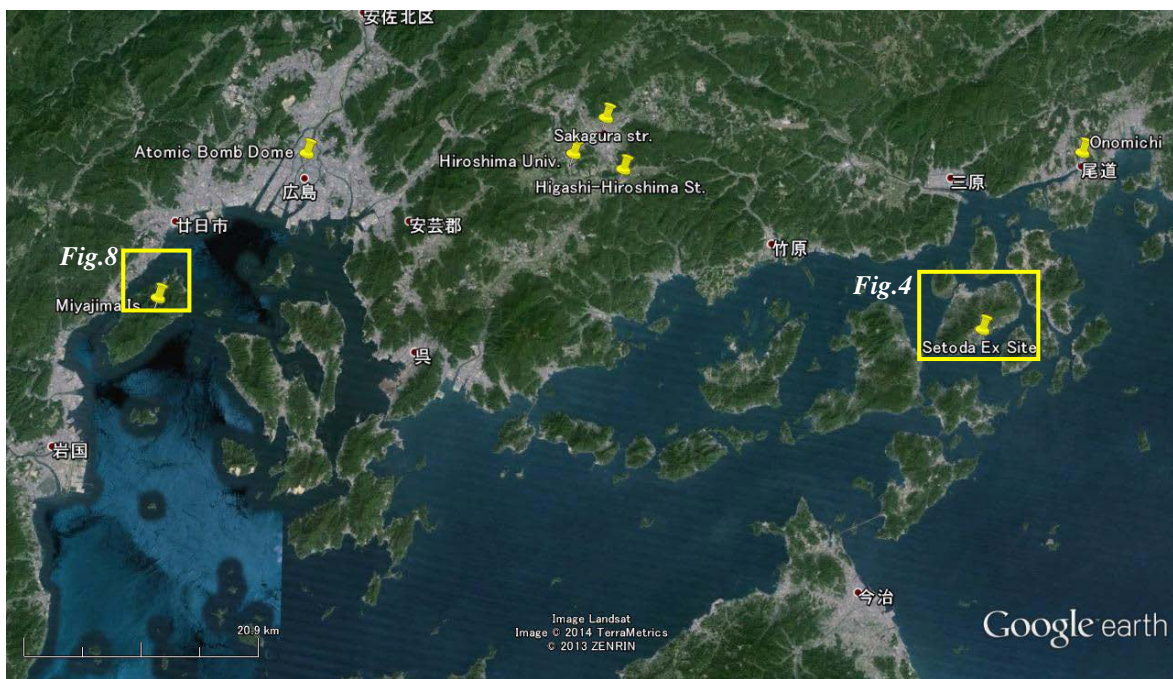


Fig.3



Fig.4 Setoda Exp. Catchment in Ikuchi Island

2 Mar 2014

8:30 start to the excursion to the eastern Hiroshima area (Fig. 3, Fig. 4), with S. Onodera and Dr. Mitsuyo Saito

10:00 Setoda experimental catchment (SEC) of Ikuchi Is., which is one of the most famous citrus (ex. lemon) plantation area in Japan (Fig. 6, 7)

11:30 Senkoji-temple, at Onomichi

12:00 lunch at Marugame-seimen (noodle in Shikoku Is.) in Onomichi

13:00 arrive at Hiroshima University

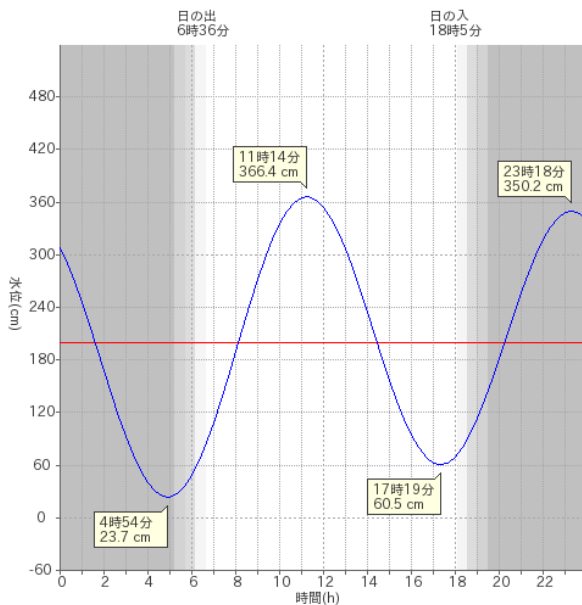


Fig.5 Tidal variation of 340cm in Ikuchi Is. on Mar. 2, during a spring tide.

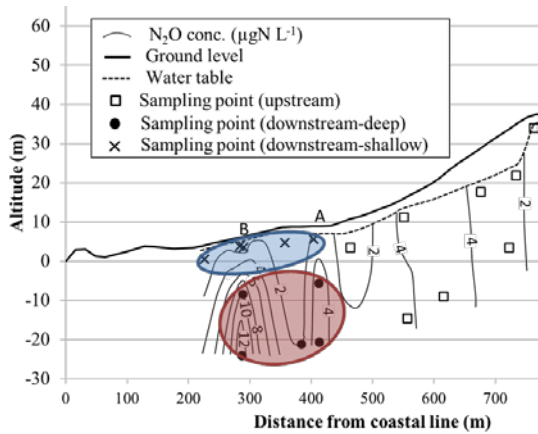


Fig.7 Distribution of N<sub>2</sub>O in SEC.

Fig.8 Miyajima area



13:00 start to the western Hiroshima area (Fig. 3), with Dr. Yuta Shimizu and Dr. G. Jin

14:00 Atomic Bomb Dome at Hiroshima (Fig. 3), where is a World Heritage place

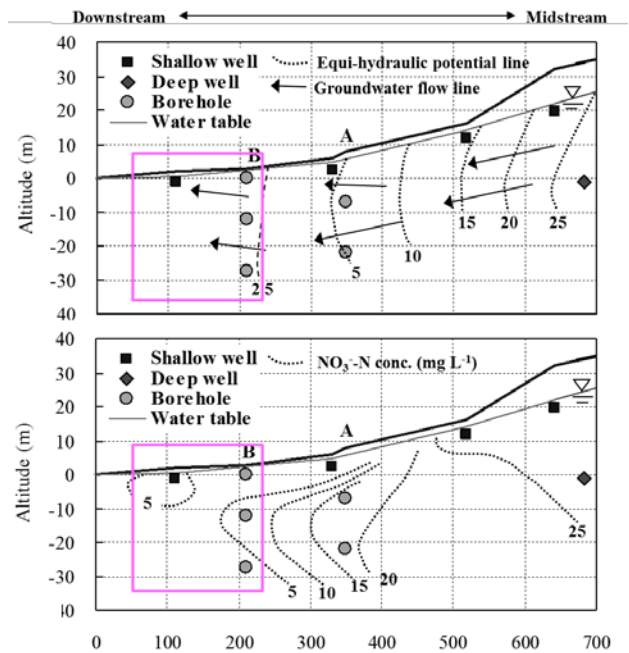


Fig.6 Distribution of hydraulic head and nitrate in SEC.



- 15:30 at the car park of Miyajima-guchi (Fig. 8)
- 15:45 by a ferry to Miyajima island, where is a World Heritage area (Fig. 8)
- 16:00 walk to Itsukushima-shrine in Miyajima Island
- 17:30 at the car park in Miyajima-guchi
- 18:30 dinner for enjoying Anago (sea eel) -meshi at Miyajima service area of the Highway
- 20:30 check in the room

3 Mar 2014

- 7:40 Prof. Tase will check out the room, and to Higashi-Hiroshima Station (train 8:05)
- 8:30 start to the sightseeing of the Sakagura str. (producing factory and well) at Saijo (Fig. 2a), with Onodera and Mitsuyo Saito
- 10:00 or 11:00 depart to Kyoto or Tsukuba at Higashi-Hiroshima Station.
- 12:00 or 13:00 arrive at Kyoto



Fig.9 Sake Factories and wells for the sake, located on Sakagura Street